

Common uses for Class A recycled water

The table below lists established uses for Class A recycled water and suggestions for other types of uses that may be appropriate. South East Water will work with individual customers to assess if Class A recycled water is fit for your purpose.

Use Category	Description	Typical Use
Nurseries	The growing of plants for non-food purposes.	Irrigation Washing and cleaning
Market gardens	The growing of plants for food production	Irrigation Washing and cleaning of equipment and surfaces
Quarrying and sand mining	Use of water to produce building materials	Washing and cleaning sand and crushed rock Dust suppression
Livestock, cattle, sheep, horses, goats (*excl pigs)	The growing of pasture/ crops for grazing or fodder production	Irrigation Wash down water for dairy sheds and stockyards (excluding milking equipment)
Municipal irrigation	Irrigation of open spaces eg. sports ovals, parks/gardens	Irrigation
Turf farms	Growing turf for commercial purposes	Irrigation

Register your interest - Connect to the scheme

If you're a landholder, farmer or business in the Pakenham South, Cora Lynn, Vervale, Catani, Iona, Tynong, Garfield or Bayles areas, we'd love to hear from you.

We're seeking potential customers who are located within approximately 2km of our proposed recycled water pipeline (see map), and who meet some or all of the following requirements:

- Use large volumes of water for irrigation, agricultural or commercial purposes
- Grow multiple crops and irrigate for long periods across the year (up to 200 days)
- Have existing onsite storage capacity to hold recycled water, and / or would be willing to construct storages.

Get in touch:

**Guy Frodsham**  
Senior Circular Economy Planner, South East Water  
e: [Guy.Frodsham@sew.com.au](mailto:Guy.Frodsham@sew.com.au)  
m: 0428 597 581  
Web: [southeastwater.com.au/westernport](https://southeastwater.com.au/westernport)

How to get in touch

**Report a leak or check interruptions**  
[mysupport.southeastwater.com.au/LIVE](https://mysupport.southeastwater.com.au/LIVE)  
**Faults and emergencies** 13 28 12 (24hrs)  
**Account enquiries** 13 18 51  
(8am – 6pm, Mon – Fri)  
**TTY users** 13 36 77 (ask for 13 18 51)

Interpreter service

**Languages other than English**  
03 9280 0779  
إذا كنت تحتاج لمترجم، اتصل بالرقم 03 9280 0779  
如需口译服务，敬请拨打: 03 9280 0779  
Εάν χρειάζεστε διερμηνέα, επικοινωνήστε με το 03 9280 0779  
Jika Anda membutuhkan seorang juru bahasa, telepon 03 9280 0779

Follow us on socials for updates



**Projects contact**  
1800 407 877  
[engagement@sew.com.au](mailto:engagement@sew.com.au)

[southeastwater.com.au](https://southeastwater.com.au)

South East Water

Pakenham Water Recycling Plant

Project news



Upgrading for future flows

Our Pakenham Water Recycling Plant is upgrading to support catchment growth, manage large wet weather flows, and supply Class A recycled water to the region via the Western Port Recycled Water Scheme.

Pakenham South Employment Precinct Branch Sewer

This project connects the Pakenham Water Recyling Plant to new sewerage infrastructure that will service the future Employment Precinct in Pakenham South.

We're constructing approximately 600m of sewer pipeline within the Pakenham Water Recycling Plant, connecting to the future Employment Precinct beneath the road reserve of Healesville-Koo Wee Rup Road.

We're working with our industry partner, Beca Fulton Hogan Interflow (BFHI) to deliver the project.

For more information on the Pakenham South Employment Precinct, visit the Cardinia Shire Council website.

Wet Weather Storage

This project will construct 2 earthen, concrete-lined lagoon storages within the Pakenham Water Recycling Plant to provide an additional 19.5 million litres of wastewater capacity.

A dedicated wet weather sewage pump station will transfer sewage to these lagoons to help manage wastewater flows to the plant during large wet weather events. This essential upgrade will reduce the risk of spills into the environment, and ensure the reliability of our wastewater collection and treatment services for the growing population.

We're working with our industry partner, Abergeldie, BMD & KBR (ABK) to deliver the project.

Projects timeline

- **June - Sept 2025**  
**Pakenham South Employment Precinct**  
• Branch sewer construction
- **July - Dec 2025**  
**Western Port Recycled Water Scheme**  
• transfer main pipeline construction, pipeline investigations
- **Aug 2025 - Nov 2026**  
**Wet Weather Storage**  
• New lagoons and pump station construction
- **Feb - Dec 2026**  
**Western Port Recycled Water Scheme**  
• Stage 1A construction  
23.2km distribution pipelines to Pakenham South, Cora Lynn and south of Tynong

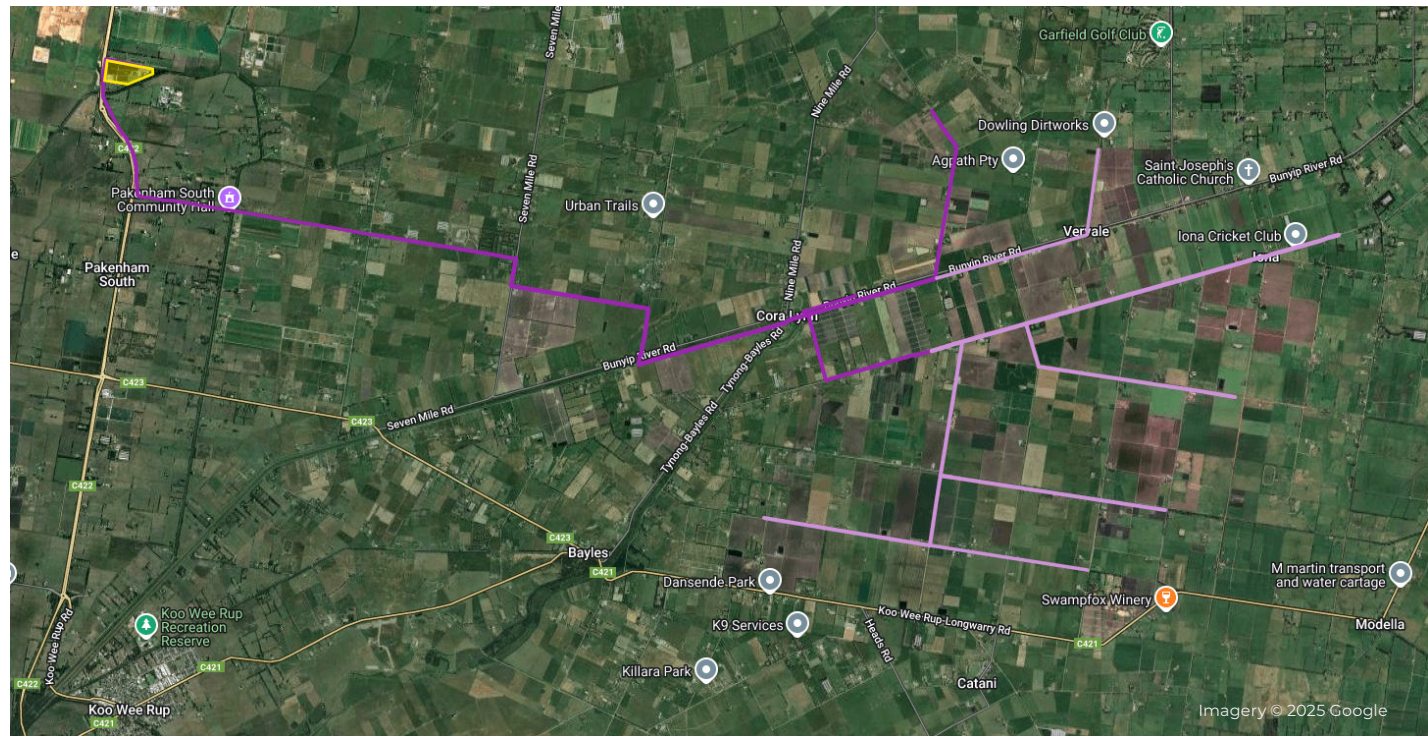
\*Project timelines subject to change



**Find out more**  
Scan the QR code or visit [southeastwater.com.au/wrppakenham](https://southeastwater.com.au/wrppakenham)







Stage 1A   
Stage 1B   
Pakenham Water Recycling Plant 

\*Pipeline alignment subject to change

## Western Port Recycled Water Scheme

Our Pakenham Water Recycling Plant will supply Class A recycled water to the scheme via new pipelines to Pakenham South, Cora Lynn, Vervale, Catani, Iona, Tynong and Bayles.

### Stage 1A

Stage 1A will construct the transfer main and pump station inside the Pakenham Water Recycling Plant, followed by 23.2km of distribution pipelines to supply Pakenham South, Cora Lynn and south of Tynong areas.

### Stage 1B

Stage 1B will extend the recycled water pipelines to include Vervale, Catani, Iona, Garfield and Bayles.

### Project timeline

Stage 1A construction has been awarded to our industry partner, Beca Fulton Hogan Interflow (BFHI).

**Stage 1A transfer main:**  
July - October 2025.

**Stage 1A distribution pipelines:**  
Investigations July - Dec 2025  
Construction Feb - Dec 2026.

**Stage 1B distribution pipelines:**  
Construction expected to start approximately 2027.

## Key Benefits



Increasing agricultural production



Reducing reliance on surface water and groundwater for irrigation



Supporting local food production and creating local jobs



Reducing the amount of recycled water going out to sea



**Find out more**

Scan the QR code or visit [southeastwater.com.au/westernport](https://southeastwater.com.au/westernport)



South East Water 

## Frequently asked questions



### What is the Western Port Recycled Water Scheme?



The scheme will provide Class A recycled water to agricultural areas in the south of Cardinia Shire, including Pakenham South, Cora Lynn, Vervale, Catani, Iona, Garfield, Tynong and Bayles. The scheme aims to increase the volume of fit-for-purpose water sources to help these regions adapt to a changing climate.



### Who can connect to the scheme?



Landholders, farmers and businesses in the Pakenham South, Cora Lynn, Vervale, Catani, Iona, Garfield, Tynong and Bayles regions located within approximately 2km of our proposed recycled water pipelines and who meet all or some of the following criteria:

- Use large volumes of water for irrigation or agricultural purposes
- Grow multiple crops and irrigate for long periods across the year (up to 200 days)
- Have existing onsite storage capacity to hold recycled water, and / or would be willing to construct additional storage.

We'll preference customers who demand a regular supply of recycled water throughout the year. We'll also consider opportunities for new enterprises looking to start in the area and who require large volumes of recycled water.



### What crops can I irrigate with Class A recycled water?



Class A recycled water can be used for a range of applications, including food crops that are consumed raw, like carrots, cabbage and leafy greens, and the irrigation of pasture.



### Can Class A recycled water be used as drinking water for livestock?



Class A recycled water is treated to the highest standard and can be used as drinking water for all livestock, except pigs. Visit EPA Victoria [www.epa.vic.gov.au](https://www.epa.vic.gov.au) for more information.



### How much will I pay for Class A recycled water?



We're currently finalising our pricing model for the Western Port Recycled Water Scheme. Before customers sign up to the scheme, we'll communicate how much the recycled water will cost.



**Find out more**

Scan the QR code or visit [southeastwater.com.au/westernport](https://southeastwater.com.au/westernport)

