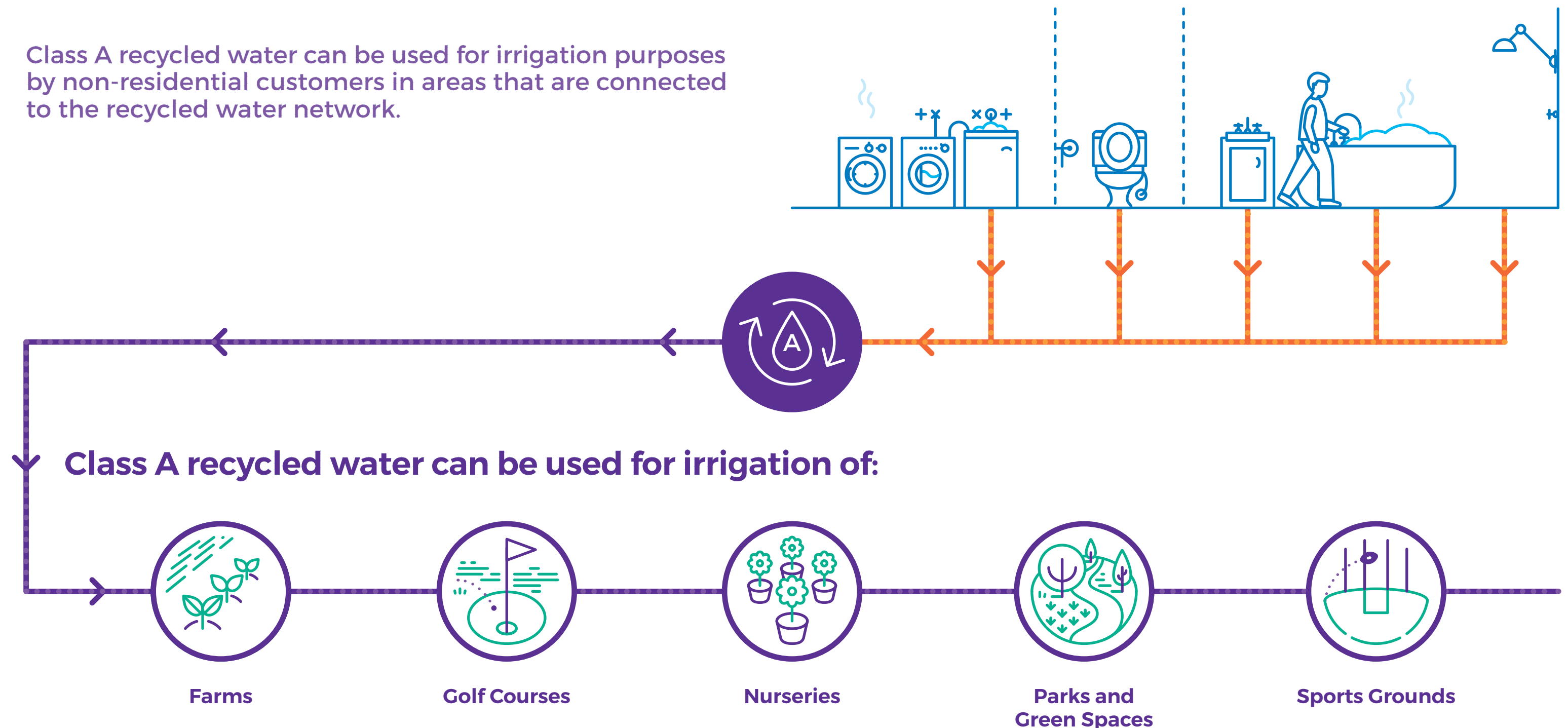


# Recycled Water

## Class A Non Residential Use



Class A recycled water can be used for irrigation purposes by non-residential customers in areas that are connected to the recycled water network.



For more information on recycled water and its uses go to: [www.southeastwater.com.au/RecycledWater](http://www.southeastwater.com.au/RecycledWater)

All treatment and usage of Class A Recycled water is in line with the Environment Protection Authority guidelines.